



To: Qualifiers, Esports Finals  
From: Chris Schwarz, IHSA  
Date: April 20, 2026  
Re.: Finals Qualifying Information

On behalf of the Illinois High School Association, Board of Directors, and Esports Advisory Committee, congratulations on qualifying for the 2026 IHSA esports Finals.

The Esports Finals will be held on Saturday, May 2, 2026, at Evergreen Park Community High School.

Enclosed you will find information that will assist you in your preparation for the state finals. Should you have questions regarding the state finals, please feel free to contact any of the individuals listed on the 'Contact Information' page of this packet. Included in this packet are the following items:

- Cover letter
- Finals Information
- Finals Contact Information
- Finals Time Schedule
- Event Location, Map, & Accommodations
- Individual Games and Tournaments
- 'Do What's Right' Sportsmanship Announcement

Congratulations and best of luck at the IHSA Esports State Final!



## IHSA Esports Finals Information

- Date: May 2, 2026
- Location: Evergreen Park Community High School, 9901 S. Kedzie, Evergreen Park, IL 60805
- Contacts: Chris Schwarz, IHSA  
[cschwarz@ihsa.org](mailto:cschwarz@ihsa.org)  
309.663.6377
- Dan Truffa, State Final Manager  
[dtruffa@evergreenpark.org](mailto:dtruffa@evergreenpark.org)
- Tom O'Malley, Superintendent District 231  
[tomalley@evergreenpark.org](mailto:tomalley@evergreenpark.org)
- Amy Kazin, Evergreen Park Activities Director  
[akazin@evergreenpark.org](mailto:akazin@evergreenpark.org)
- Schedule: Check in for the state finals will begin at 7:45 a.m. Enter through the main entrance. See the attached map for parking and entrance locations. See full schedule on page 5.
- Events: Play will be conducted for the following games: Super Smash Bros. Ultimate (Crew Battle and singles), Rocket League, Mario Kart 8 Deluxe, EA Sports FC, and EA Madden NFL. Each game will consist of 16 individuals or teams playing in a double-elimination format to determine 1<sup>st</sup>-4<sup>th</sup> place in each game.
- Game Rules: A complete list of game rules can be found under the 'Game Summaries' link on the esports page at [www.ihsa.org](http://www.ihsa.org).
- Awards: Medals will be awarded to the first through fourth place finishers in each game, and plaques will be awarded to the school whose player or team finishes first in each game.
- Spectators: Each competition room will have a designated spectator area with the exception of the Rocket League lab. Streaming areas for Rocket League will be available at Evergreen Park Community High School. Due to limited space in the other competition rooms, spectators are asked to only be present in the competition rooms when their teams or individuals are actively competing. Awards will be distributed in the Evergreen Park Community High School theater, and spectator viewing of awards will be permitted. There is no admission charge for spectators.

## Peripherals:

Participants may bring their own controllers that are limited to the following:

1. PC Games: First-party and third-party controllers with back paddles.
2. Console Games: First-party and third-party controllers with all extraneous paddles, macro switches, and any other programmable buttons are physically removed.

The wording of this rule is not clear on whether a player can bring a controller with back paddles that doesn't use turbo or macro functions. The main intent of this rule is that each press of the button equates to one command in the game. The intent of this rule would allow players to use back paddles if they were only used for single button press functions. For clarification purposes, a back paddle will not be considered "extraneous" and may be used if it's for single button press functions.

Turbo buttons and functions are not permitted.

(Competing schools will be responsible for safety and maintenance of their own equipment)

**Questions:** Coaches with questions can contact either Chris Schwarz (IHSA) or State Final Manager Dan Truffa.





## Tournament Staff and Contact Information

### **IHSA Esports Administrator**

Chris Schwarz, IHSA  
[cschwarz@ihsa.org](mailto:cschwarz@ihsa.org)  
(309)-663-6377

### **State Finals Hosts**

Tom O'Malley - Superintendent  
[tomalley@evergreenpark.org](mailto:tomalley@evergreenpark.org)  
(708) 398-1230

Matt Dugan - Principal/Assistant Superintendent  
[bsanderson@evergreenpark.org](mailto:bsanderson@evergreenpark.org)  
(708) 398 1233

Amy Kazin - Activities Director  
[akazin@evergreenpark.org](mailto:akazin@evergreenpark.org)  
(708) 398 1338

Daniel Truffa - Head eSports Coach/State Finals Manager  
[dtruffa@evergreenpark.org](mailto:dtruffa@evergreenpark.org)  
(708) 398 1315

Jason Burns - Assistant eSports Coach/Assistant State Finals Manager  
[Jburns2@evergreenpark.org](mailto:Jburns2@evergreenpark.org)  
(708) 398-1359



## 2025-26 Esports State Finals Time Schedule

**State Final Tournament - held at Evergreen Park Community High School, Evergreen Park, IL**

May 2 The state final shall be a one-day event using the following schedule:

- |                     |   |
|---------------------|---|
| 7:45 a.m.-8:30 a.m. | Registration/Check-in<br>Coaches will be asked to confirm participants upon arrival and check-in. |
| 8:30-8:45 a.m.      | Coaches Meeting   |
| 8:45-9:00 a.m.      | Final instructions to teams by coaches  |
| 9:00 a.m.           | Preliminary round competition in all games  |

Awards will take place in the theatre after the conclusion of the final matches.



## Event Location

This year's state final will be held at Evergreen Park Community High School in Evergreen Park Illinois.

Evergreen Park Community High School  
9901 S. Kedzie Avenue  
Evergreen Park Illinois, 60805

### Travel/Directions

**IMPORTANT GPS NOTE:** Evergreen Park Community High School is located at 9901 S. Kedzie in Evergreen Park. Please make sure that your GPS is routing you to that address. (For some navigation systems, if you enter Evergreen Park High School District 231, you will be routed to the junior high school. It's not far away from the high school, but still an inconvenience to go to the wrong location first.)

**Interstate 294 from the North:** Take 294 South to 95th Street. Exit 95th Street east. After approximately 6 miles, turn right (south) onto Kedzie Avenue. EPCHS will be on the east side of the street at 99th and Kedzie.

**I-57 from the South:** Take exit 355 toward Monterey Ave/111th St  
Continue onto S Hamlet Ave,  
Use the left 2 lanes to turn left onto W 112th Pl,  
Continue onto W Monterey Ave (0.5 mi),  
Continue onto W 111th St  
Turn right onto Longwood Drive. Proceed to 99th Street  
Turn left onto 99th Street. EPCHS will be on the northeast corner of 99th and Kedzie.

**I-55 from the South or West:** Take I-55 North to I-80 East. Follow I-80 East to I-57 North. Take Exit 355 toward Monterey Ave/111th Street. (Then follow directions from I-57).

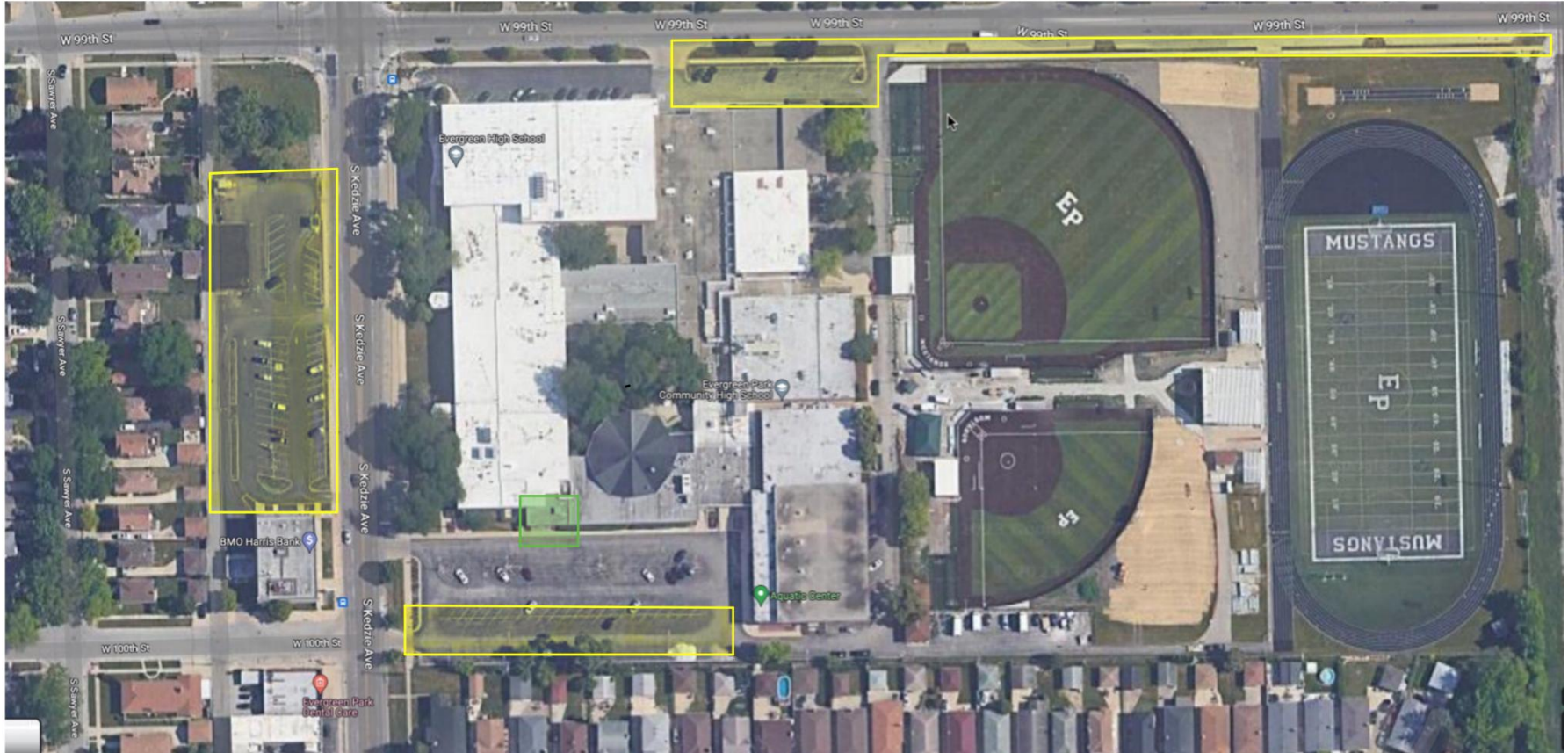
**I-94 East from the North:** Follow I-94 East until it becomes I-294. Take I-294 South to 95th Street and exit 95th Street East. After approximately 6 miles, turn right (south) onto Kedzie Avenue. EPCHS will be on the east side of the street at 99th and Kedzie.

**I-88 East from the West:** Take I-88 East to I-294 South. Take I-294 South to 95th Street and exit 95th Street East. After approximately 6 miles, turn right (south) onto Kedzie Avenue. EPCHS will be on the east side of the street at 99th and Kedzie.

**Parking:** Please park busses in the south lot along the fences or the north parking lot. Additional parking is available along 99<sup>th</sup> street next to the football field and at BMO Harris bank across the street. (See next page).

**Yellow Highlight - Parking**

**Green Highlight - Main Entrance**





## **Accommodations**

### **Concessions**

Concessions will be available during the tournament.

### **Food/Restaurants**

Outside food will not be permitted in the school building during the tournament. However, below is a sample of the available options within 5-10 minutes of Evergreen Park Community High School if you choose to eat out.

### **Hospitality Room**

There will be a hospitality room for coaches and event staff.

### **Fast Food:**

- McDonalds: (.5 miles) - 10320 S. Kedzie, Chicago
- Popeye's Chicken (.5 miles) - 10331 S. Kedzie, Chicago
- Pop's Beef and Italian Sausage (.5 miles) - 10337 S. Kedzie, Chicago
- Culvers: (.4 miles) - 9515 S. Kedzie, Evergreen Park
- Subway - 3338 W. 95th Street, Evergreen Park
- Jimmy John's - 9451 S. Kedzie, Evergreen Park
- Dunkin' Donuts - 3332 W. 95th Street, Evergreen Park
- Dunkin' Donuts - 9601 S. Pulaski, Evergreen Park
- Oberweis - 3152 W. 95th Street, Evergreen Park
- Panera Bread - 4011 W 95th St, Oak Lawn
- Shake Shack - 4071 W 95th St, Oak Lawn
- Andy's Frozen Custard - 9507 S. Cicero, Oak Lawn
- Burger King - 4545 W. 95th Street, Oak Lawn

### **Dine-In**

- Durbin's Pizza of Evergreen Park (.4 miles) - 10240 S. Kedzie
- Barraco's Pizza (Pizza/Italian/Sandwiches) - 3701 W. 95th Street
- Chi Tung (Chinese/Japanese/Hibachi) - 9560 S. Kedzie
- Pappy's of Evergreen Park (beef sandwiches, burgers, salads, ice cream) - 3301 W. 95th Street
- La Cocina Jalisciense (Mexican cuisine) - 3224 W. 95th Street
- Unidad (Latin cuisine) - 3339 W. 95th Street
- Portillos (hot dogs, beef sandwiches, salads, etc.) - 4020 W. 95th Street, Oak Lawn
- Jedi's Garden (family restaurant, breakfast) - 9266 S. Cicero, Oak Lawn

### **Nearby Hotels**

- Oak Lawn Hilton - 9333 S. Cicero, Oak Lawn
- DoubleTree by Hilton - 5000 W 127th St, Alsip
- Baymont by Wyndham - 12801 S Cicero Ave, Alsip
- Holiday Inn Express - 13330 S Cicero Ave, Crestwood
- There are multiple other accommodation options within 20 minutes of Evergreen Park Community High School in the surrounding suburbs.



## Individual Games and Tournaments

### Super Smash Brothers Ultimate - Solo Tournament

The Super Smash Brothers Ultimate Solo competition will be taking place the main LRC. Competitions will be held in glassed study rooms. Only competitors will be allowed to enter competitions rooms, but coaches and spectators can view games through the glass from outside of the rooms. Each room will be equipped with the following:

- Individual Gaming Monitors for each competitor.
- A large 55inch television for spectators and coaches.
- An audio splitter for each competitor.

### Equipment

- Students will be provided with joy cons.
- If students wish to use any other controller, they must provide it themselves.
- Controllers must meet requirements established in the IHSA eSports Terms and Conditions
- The large televisions in the room will be controlling the volume, but students will have the option to plug headphones directly into the switch if they prefer.
- Headphones must be brought by competitors if they wish to use them.

Recent rule changes have banned the character Steve from competitive matches.

### Super Smash Brothers Ultimate - Crew Battle Tournament

The Super Smash Brothers Ultimate Crew Battle competition will be taking place in the Professional Development Room (PDR) in the LRC. Competitions will be held on one of four 55-inch tv's. Competition areas will be sectioned off from spectating areas. Only competitors will be allowed to enter the competition area. Coaches and spectators can view the competition from the spectator area. Each competition area will be equipped with the following:

- Individual Gaming Monitors for each competitor.
- A large 55inch television for spectators and coaches.
- Substitutes from each team may sit in the spectator area when not competing.

### Equipment

- Students will be provided with Joy-Cons.
- If students wish to use any other controller, they must provide it themselves.
- Controllers must meet requirements established in the IHSA eSports Terms and Conditions
- Headphones must be brought by competitors if they wish to use them.

Recent rule changes have banned the character Steve from competitive matches.



## **Mario Kart 8 Deluxe Tournament**

The Mario Kart 8 competition will be taking place in Lab 3 in the LRC. Competitions will be held on four monitors, two per team playing split screen. Competition areas will be sectioned off from spectating areas. Only competitors will be allowed to enter the competition area. Coaches and spectators can view the competition from the spectator area.

Each competition area will be equipped with the following:

- 4 individual monitors for races (2 Per Team)
- 4 Nintendo Switches (2 Per Team)
- Substitutes from each team may sit in the spectator area when not competing.

## **Equipment**

- Students will be provided with a single Joy-Con.
- If students wish to use any other controller, they must provide it themselves.
- Controllers must meet requirements established in the IHSA eSports Terms and Conditions
- Headphones must be brought by competitors if they wish to use them.

\*Games will be played via a LAN connection. Students may use the dual joy-con option if they like.

\*\*Each competition space will contain four switches. All karts, wheels, and gliders will be available for each counsel. Schools may plug in their own counsel but are then responsible for any technological errors that may occur.



## **Rocket League Tournament**

The Rocket League competition will be taking place in Lab 1 in the LRC. Competitions will be held on 28 separate gaming PC's. Only competitors and Coaches will be allowed to enter the competition area. Spectators can view the competition from the spectator area in the cafeteria.

### **PC Spec - Alienware Aurora R13 Gaming PC**

- 16 GB Ram
- GPU - Nvidia GeForce RTX 3080
- CPU - Intel i7-12700F
- Storage - 512GB SSD
- Monitor - Alienware 27in, 240hz Gaming Monitors

### **Equipment**

- Students will be provided with a Mouse and Keyboard
- If students would like to use a controller, they must provide it themselves.
- Controllers must meet requirements established in the IHSA eSports Terms and Conditions
- If students wish to have game audio, they must provide their own headphones.



## **EA Sports FC Tournament**

The EA Sports FC competition will be taking place in Lab 2 in the LRC. Competition will be held on two separate 55-inch televisions. A Competition area will be sectioned off from spectating areas. Only competitors will be allowed to enter the competition area. Coaches and spectators can view the competition from the spectator area.

### **Equipment**

- Students will be provided with standard PlayStation 5 Controllers.
- The most current version of EA Sports FC will be used.
- Rosters will be updated the Wednesday before the competition

## **EA Madden NFL Tournament**

The Madden competition will be taking place in Room 218 just outside of our LRC. Competition will be held on two separate 55-inch televisions. A Competition area will be sectioned off from spectating areas. Only competitors will be allowed to enter the competition area. Coaches and spectators can view the competition from the spectator area.

### **Equipment**

- Students will be provided with standard PlayStation 5 Controllers.
- The most current version of Madden will be used.
- Rosters will be updated the Wednesday before the competition.



# Do What's Right! Sportsmanship

## DWR Expectations!

1. Represent your school and community favorably through positive interaction with opposing fans and players before, during, and after the competition.
2. Use positive yells, chants, songs, or gestures.
3. Display modesty in victory and graciousness in defeat.
4. Respect and acknowledge the integrity and judgment of officials.
5. Exhibit positive behavior in both personal interaction and social media comments.

## Acceptable Behaviors

- During the National Anthem, students, participants, and fans should remove any hats, face the flag, not talk, place the right hand on the heart, and remain still until the end of the anthem.
- Applause during introduction of players, coaches, and officials.
- Players shaking hands with opponents while both sets of fans recognize player's performance with applause.
- Accept all decisions of the game officials.
- Spirit Participants lead fans in positive support.
- Handshakes between participants and coaches at the end of contests, regardless of the outcome.
- Treat competition as a game, not a war.
- Coaches/players search out opposing participants to recognize them for outstanding performance or coaching.
- Applause at the end of the contest for performance of all participants.
- Everyone showing concern for an injured player, regardless of the team.
- Encourage surrounding people to display sportsmanlike conduct.

## Unacceptable Behaviors

- Disrespectful or derogatory yells, chants, songs, or gestures.
- Booming or heckling an official's decision.
- Criticizing officials in any way; displays of temper with an official's call.
- Yells that antagonize opponents.
- Refusing to shake hands or give recognition for good performances.
- Blaming the loss of the game on officials, coaches, or participants.
- Laughing or name calling to distract an opponent.
- Use of profanity or displays of anger that draw attention away from the game.
- Doing own yells instead of following the lead of spirit participants.